




**2019**

Swiss International  
**Summer**

**School** Part 2



**Alpine  
Environmental  
Archaeology**



# 2019

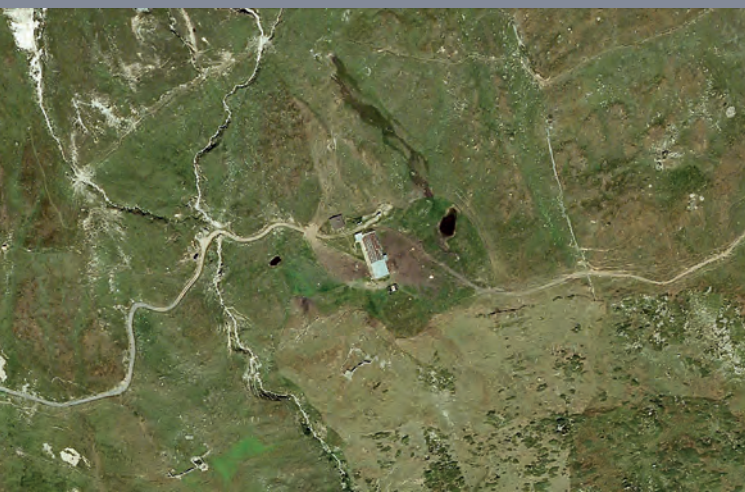
# for Alpine Archaeology

The Universities of Bern and Zurich are organising the second SISA Summer School (2019) in the Binntal (VS) in cooperation with the Archaeological Heritage Service of the Canton of Valais. The SISA will be about Alpine landscapes, geology, mineralogy and ores, copper production, prospection and excavation methods as well as social and economic systems in an Alpine area. It comprises invited keynotes for specific topics and teachings on methods, applications, and models. Lectures and practical fieldwork take place in the archaeologically most promising high-alpine region of southern Switzerland.



**Terms and conditions:**  
**Saturday 06 July to Saturday 13 July**  
**Simple accommodation, board and lodge at Binntal, Canton of Valais, CH.**  
**Working in Alpine environment: 2.000 masl (climate!), no electricity.**  
**PhD and advanced MA with special interests in mountain, environmental and/or mining archaeology.**  
**Participation fee CHF 400.-**  
**More information on**

[sisa.archaeological.science](http://sisa.archaeological.science)



## Topics

**Survey and Landscape**  
**Alpine Economy**  
**Pastoralism**  
**Mining**  
**Geology**  
**Mineralogy**

**Organizing units: UZH&UniBE**

**Contact: Rouven Turck**  
[turck@archaeologie.uzh.ch](mailto:turck@archaeologie.uzh.ch)

